

- **Standard 17" opening** – a direct, balanced opening makes for easy cow or bull entry so there's no need for "optional" labor-intensive add-ons.
- **Easy Entry** to facilitate heifer training / bull use – no rigid pipes against the cows neck.
- **Same great, time-proven ALBERS frame design** eliminates unwanted double cow entry.
- Takes **half the effort** for a quicker lock-up!
- **Safe, individual cow release** – in front of the cow or from behind
- The low lock rail makes for **easier shot placement**.
- **Quiet:** Heavy-duty bumpers make this the quietest stanchion on the market.
- **Rectangular High Strength tubing** on all of the horizontal members for added strength.
- **Compare our panel weights** with the competition – **Best Value!**

Patents: 6.776.124 6.834.620

ALBERS Self Locking "Accu-Lock" (SLAC) Stanchion – Material Specifications

Material used on the 4/9', 4/10', 5/10', Super 6/10', & Mini 6/10' SLAC (Self-Locking Accu-Lock)

1. All horizontal rails to be 1-1/2" x 2" x 11 gauge hi-tensile tube steel, (50,000 P.S.I. yield strength).
2. All vertical pipes to be 1.638", (1-5/8" O.D.), hi-tensile tubing, (50,000 P.S.I. yield strength).
3. All vertical tubing to be 12 gauge (.109"+)
All other intermediate pipes to be 1.029", (1-1/6" O.D.) tubing.
4. Galvanized coating to be 4 ounces +/- 1 ounce per square foot.
5. Top rail locking bar to be .995 (1") x 12 gauge hi-tensile tubing.

Material used on 7/10' & 8/10' SLAC (Self-Locking Accu-Lock)

1. All horizontal rails to be 1-1/2" x 2" x 12 gauge hi-tensile tube steel, (50,000 P.S.I. yield strength).
2. All vertical pipes to be 1.290" (1-3/8" O.D.) tubing (50,000 P.S.I. yield strength).
3. All vertical tubing to be 12 gauge, (.109"+).
4. Galvanized coating to be 4 ounces +/- 1 ounce per square foot.
5. Top rail locking bar to be .995 (1") x 12 gauge hi-tensile tubing.

Fabrication Specifications for Steel Components

1. Locking flaps: Made of 12 gauge material with minimum G-90 galvanized coating, 14 gauge for 7/10' & 8/10'.
2. Pivot pipe bracket: To be one piece "stamped bracket", 3/16" x 1-1/2" pickled and oiled, with edges rounded, then zinc plated.
3. All mounting clamps, for wood or steel posts, to be 12 gauge galvanized steel with minimum G-90 coating.

Bolt Specifications and Bolt Sizes:

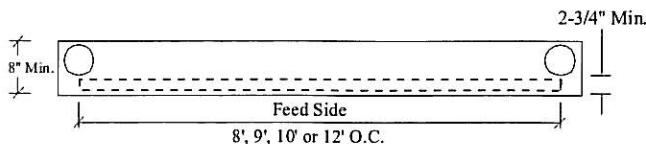
1. ALL bolts used on the Albers stanchions conform to ASTM specifications for A 307, (Low Carbon), hex cap screws and/or carriage bolts.
2. ALL bolts zinc coated to conform to A-152 standard specifications for zinc coating on iron and steel hardware.
3. On 4/9', 4/10', 5/10', 6/10' Mini, Super 6/10', and 6/12' SLAC
 - A. Locking Flap to fixed bracket – 5/16" x 2-1/4" with 5/16" nylon insert locknuts.
 - B. Pivot Bolt – 5/16" x 2-1/2" with 5/16" nylon insert locknuts.
 - C. Moveable catch bolt 5/16" x 2-3/4" with nylon insert locknuts with 3/8" O.D. galvanized spacer.
4. On 7/10', 8/10' SLAC
 - A. Locking Flap to fixed bracket – 5/16" x 2-1/4" with 5/16" nylon insert locknuts.
 - B. Pivot Bolt – 5/16" x 2-1/4" with 5/16" nylon insert locknuts.
 - C. Moveable catch bolt 5/16" x 2-3/4" with nylon insert locknuts and 3/8" O.D. galvanized spacer.

Other:

1. All vertical tubing to be cut to fit square to horizontal rails and fully welded to.
2. All welds covered with rustproof zinc coating.
3. All pivot points (movables) to be bushed
4. Locking handle mounting bracket to be made of 3/16" material, then powder coated.
5. Locking handle 1/2" x 1" with welded bushing & 3/4" knob, then powder coated.

Curb Construction for ALBERS Self-Locking Stanchions

Stanchions may be mounted on either cow stand side or feed alley side. We recommend installation on the feed side if installation is a standard one. **NOTE:** No curb pegs required on panels 10' or less. Recommended for panels longer than 10'.

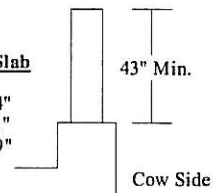


Suggested Curb Details

Clamps are available for 2-3/8", 2-7/8", 3-1/2", 4", 4-1/2" and 5" O.D. pipes. Clamps are also available for wood posts. The recommended standard is 2-7/8".

Curb Heights: recommended

Mature Cow and Heifers (Above includes 4/9', 4/10' 5/10', "Super" 6/10', & 6/12')	Cow Side	Feed Slab
6/10' Mini, 7/10'	14"	11"
8/10'	12"	9"



The Above Backed by over 50 Years of Experience in Dairy Equipment Design, Manufacture and Service